



Skwitch

App Guide



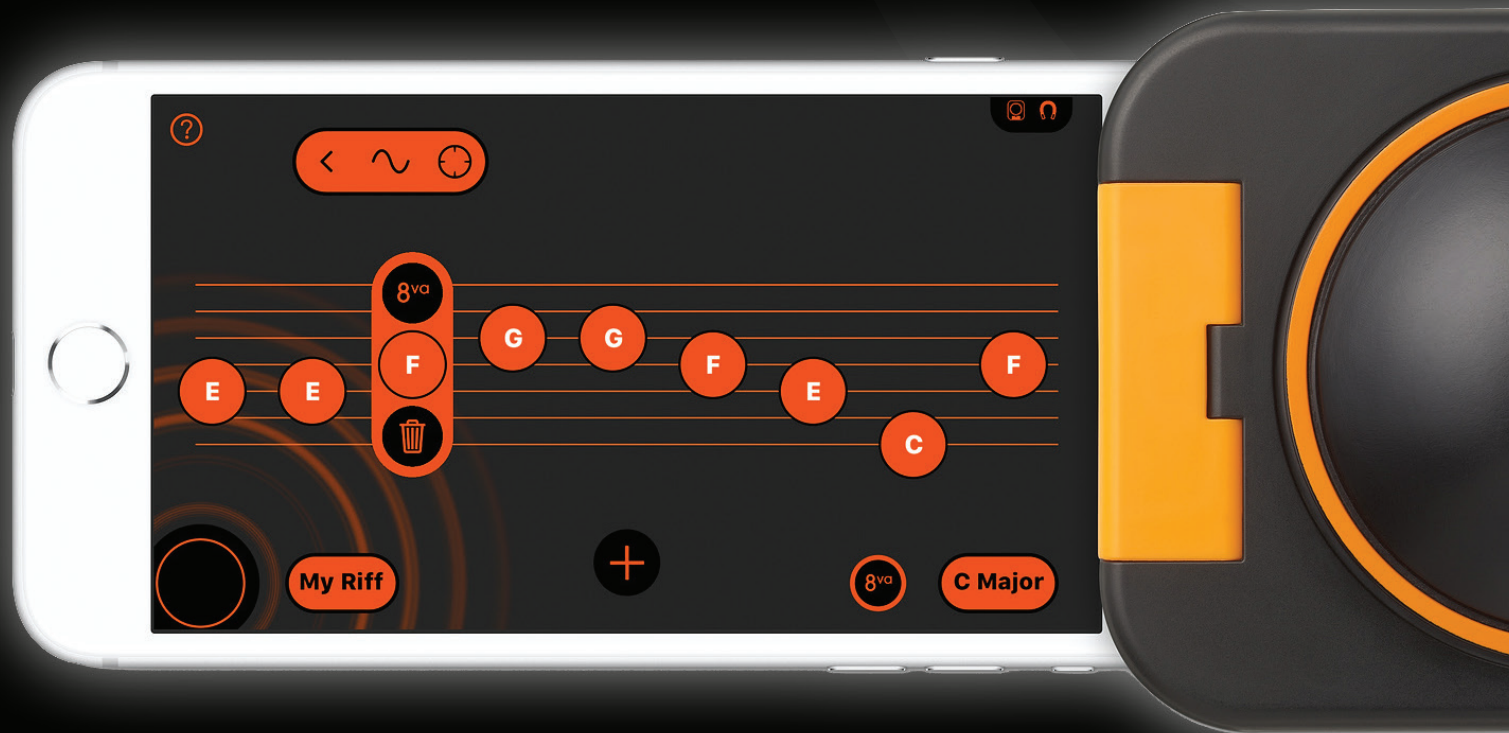
Get Skwitch App



Download on the
App Store

Download the **Skwitch Music App**.
Search your app store for "**Skwitch**"

Before using please ensure you are
running **iOS 11 or higher**.





Before you begin

The Skwitch Music App uses the compass sensor built into your iPhone to detect movement of a magnet embedded within the Skwitch button.

The App is affected by nearby magnets (just like any other compass) and **it's important to follow the in-App instructions for best performance.**

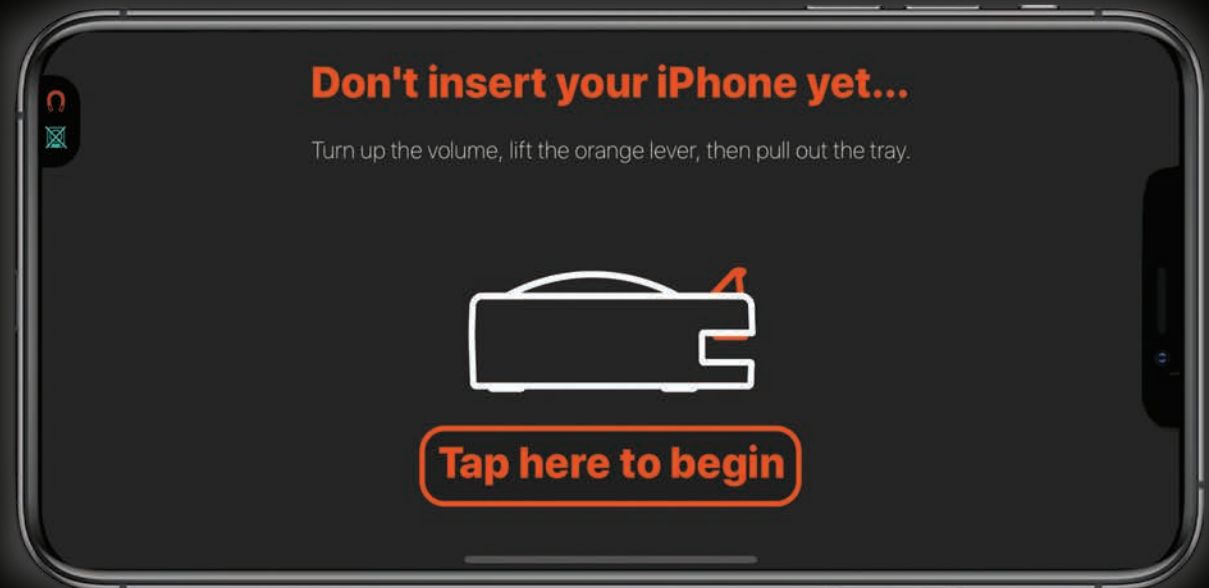
The App calibrates in two stages:

1) Away from Skwitch.

This will let the App take a snapshot of any nearby magnets and the earth's magnetic field. Pressing "Tap here to begin" will begin this first calibration.

2) Connected to Skwitch.

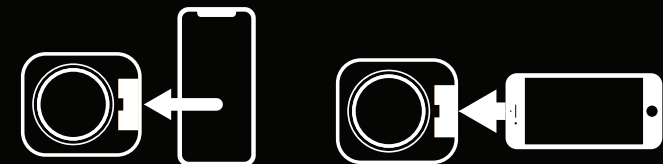
This tells the App exactly where the magnet is relative to the compass on your iPhone.





Connecting

- 1 With your Skwitch on a flat surface place your iPhone onto the tray.
- 2 Slide your iPhone into place. The on screen guides will help you.
- 3 Once your iPhone is inserted close the lever and push the button.



*Device orientation dependant on iPhone model.



Tips and tricks

The Skwitch Music App is affected by strong magnetic fields. If the iPhone is not detected it probably means that there are strong magnets nearby that might affect its performance.

Strong magnetic fields can be found in obvious places like loudspeakers and headphones, but also in some surprising places like supporting bars in desks and in arms of office chairs.

For best performance:

- keep away from magnetic objects (eg loudspeakers, steel bars, keys) to minimise interference.
- Don't move Skwitch around too much once connected, and keep it still while playing.

See the **troubleshooting page** for more information.





Project Menu

The **Projects Menu** allows you to start a new Audio/MIDI session or load an existing Session. Access tutorials on how to make the most of your Skwitch and get information on the App itself.

Audio Session

Tap to start a New Audio Session.

MIDI Session

Tap to start a New MIDI Session.

Sessions

Tap for Sessions screen.

Tutorials

Tap for in-App tutorials.

Saved sessions

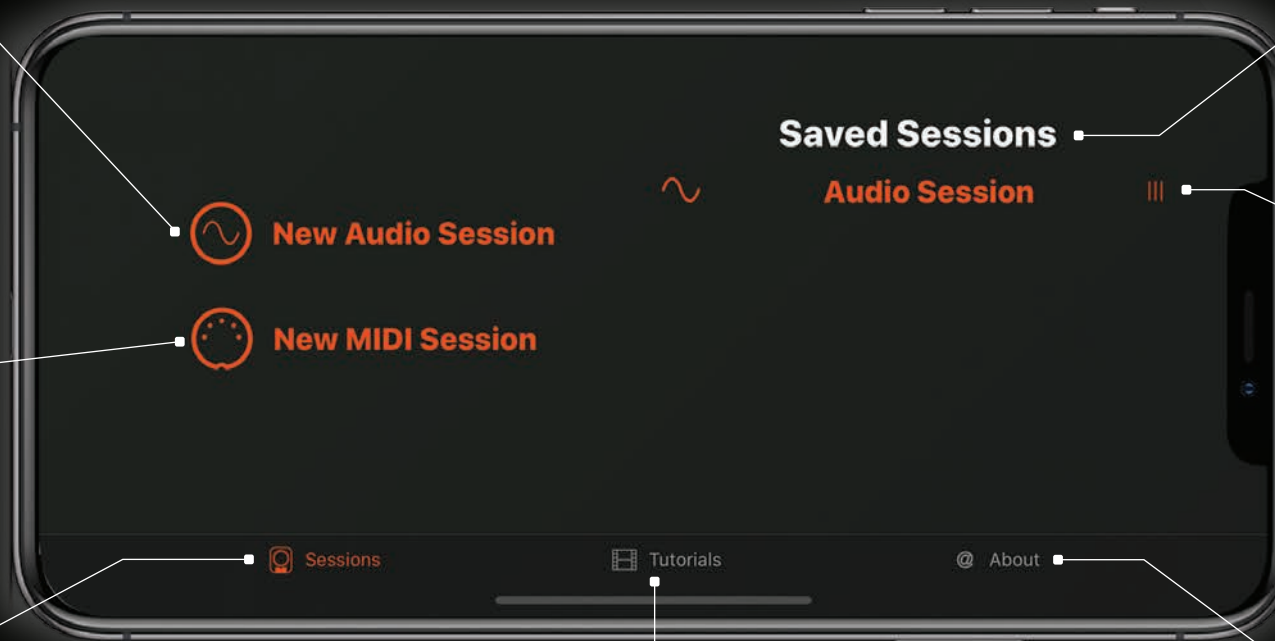
Previous Audio and MIDI sessions are available here. Tap a Session to load.

Edit Saved Session

Swipe left to Rename or delete a saved Session.

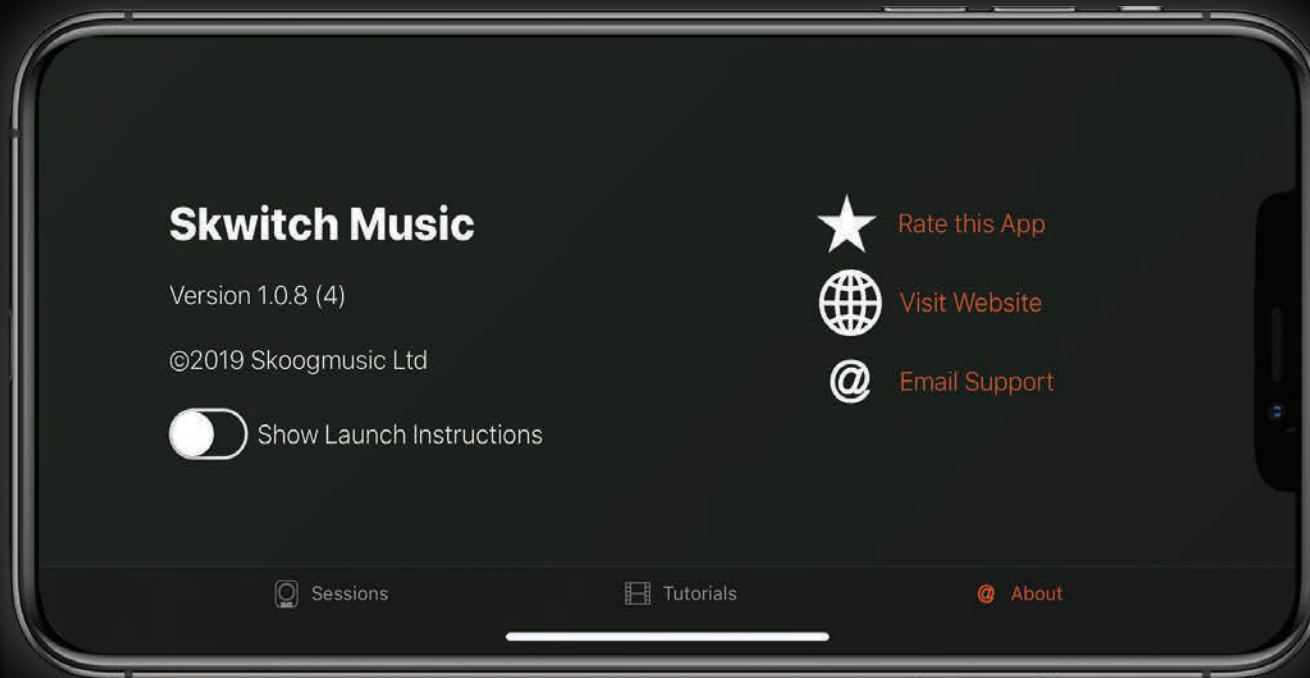
About

Tap for App details and information.





About



In the **About Page** you can contact Skoogmusic with any technical issues by tapping **Email support**.

Visit the Skoogmusic website by tapping **Visit website** or let us know what you think of the Skwitch App by tapping **Rate this App**.

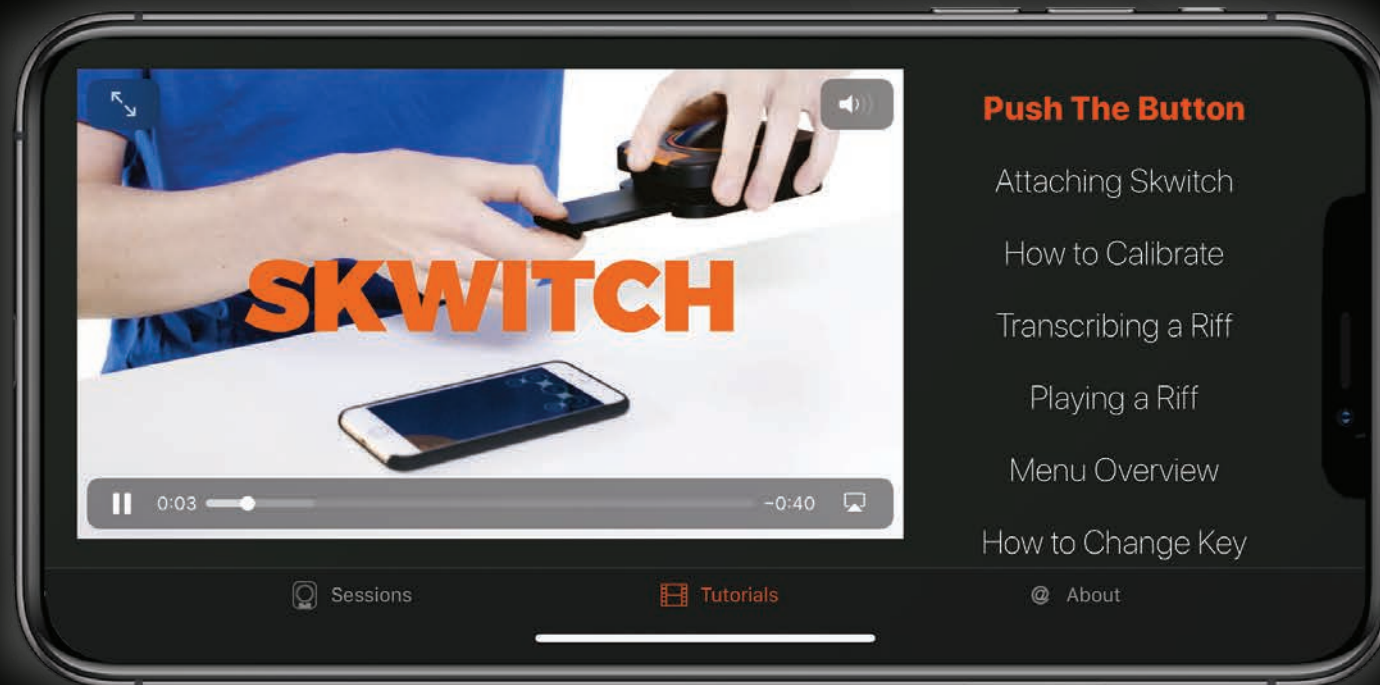


Tutorials

The **Tutorials Page** has detailed video tutorials for the different features within the App.

Scroll up and down to move through the available videos and select play when you want to watch one.

Work your way through the tutorials to get the most out of your Skwitch.





Audio Session

In **Audio Sessions** you can compose your own riffs, melodies and chord progressions using the built in sound engine.

Step forwards and backwards through your favourite melodies by pressing the Skwitch button.

Edit notes, change chords, customize trigger zones and expressively shape sound as you squeeze the button.





Audio Session Menu

Magnet Sensor

Indicates If your Skwitch is correctly calibrated.

Skwitch Connected

Indicates if your Skwitch is attached to your device or not.

Zones

Tap to customize the behaviour of your Skwitch. .

Skwitch Area

Skwitch connection area.
Note: Connection area differs across devices.

Return

Tap to return to Project Menu.

Generator

Tap to choose sounds.

Calibrate

Tap to calibrate your Skwitch.

Notes

Notes in Riff displayed here.

Help

Tap for help.

Riff

Tap to enter Riff menu .

Lock/Unlock

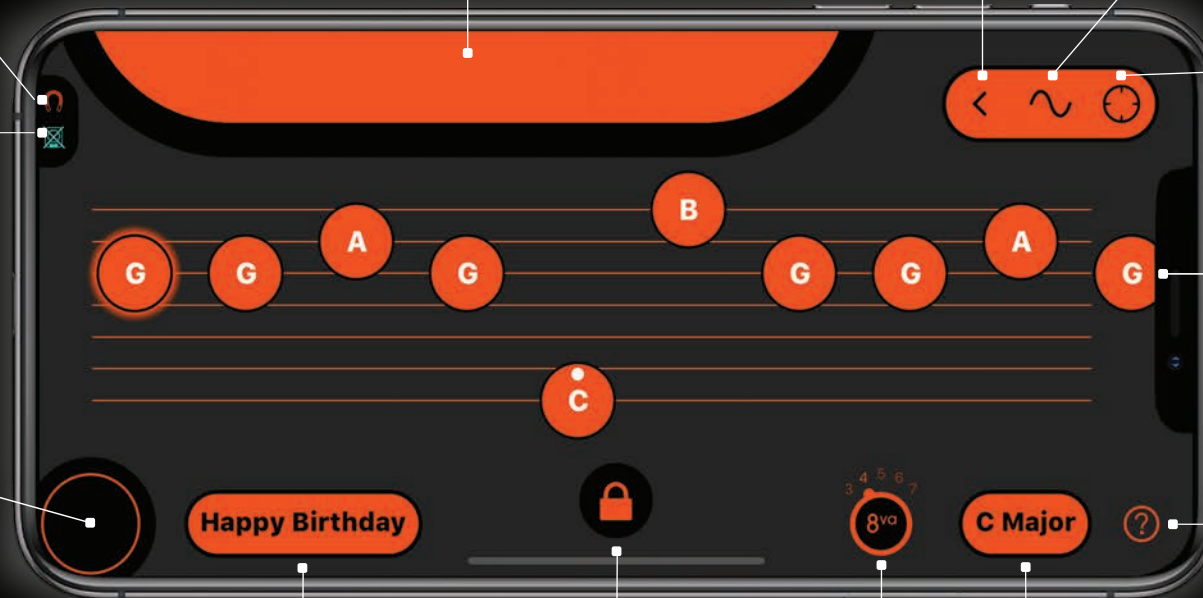
Press and hold to unlock the notes and begin editing the Riff.

Octave

Tap to change the octave of the Riff.

Key

Tap to adjust the Key.





Generator Menu

The **Generator Menu** allows you to select from a range of Synths and Filters.

Select options from both the source and Filter then press the button on your Skwitch to hear the sounds.





Zones Menu

The **Zones Menu** allows you to customize the behaviour of your skwitch.

Play notes, chords or arpeggios. Change the number of playable zones and assign a behavior to each.



Number of Zones

Tap to increase zone number from 1 to a maximum of 4.

Mode

Select to trigger notes or chords with the expressive button.

Action

Select action for zone.

Arpeggiator

Tap to enter arpeggiator menu.



Arpeggiator Menu

The **Arpeggiator Menu** allows you to control filters and speed using the expressive button.

Change the arpeggiator rate, tempo and direction.



Arpeggiator
Chose a behaviour for the Arpeggiator.

Rate and BPM
Slide to adjust note rate and beats per minute.

Quantise Rate
Tap to select Quantization option.

Map Pressure
Feedback linked to pressure.



Riffs Menu

The **Riffs Menu** allows you to select a Tune/Riff to play or edit, or to create a new Riff from Scratch.



New Riff

Tap to name and create a new Riff.

Preset Riffs

Tap to look through Riff categories.

Riff list

Select a Riff from the Riff category.

Copy Riff

Swipe left to copy Riff.



Key Menu

The **Key Menu** allows you to select the key and Scale for the Riff you are playing.

Scroll through the key options on the left and Scale options on the right.





Riff Editing

The **Riff Editing Menu** allows you to edit the notes within a riff.

Once the Riff is unlocked (press and hold the padlock to unlock) you can move the individual notes up and down to change the note. (within the key selected)

Add notes to the Riff by pressing the plus button (now in place of the lock button).

Press and hold a specific note to edit the notes Octave or delete the note entirely from the Riff.



Change Note
slide notes up and down to change the notes within the selected key

Octave
Tap to increase or decrease note octave.

Add Note
Tap to add note to the Riff

Delete
Tap to delete note from Riff



MIDI Session

In the **MIDI Sessions** you can connect your Skwitch to other MIDI compatible Apps.

Create your own riffs, melodies and play new Instruments in GarageBand or turn your Skwitch into a controller for other MIDI Apps - such as Noise.

Edit notes, change chords, customize trigger zones and expressively shape sound as you squeeze the button.





MIDI Session Menu

The **MIDI Session Menu** is the same as an Audio Session menu but the Generator button is substituted for the Bluetooth MIDI button.

Magnet Sensor

Indicates If your Skwitch is correctly calibrated.

Skwitch Connected

Indicates if your Skwitch is attached to your device or not.

Zones

Tap here to customize the behaviour of your Skwitch. .

Riff

Tap to enter Riff menu .

Skwitch Area

Skwitch connection area.

Return

Tap to return to Project Menu.

MIDI

Tap to set up Bluetooth MIDI connection. (MPE/controller)

Calibrate

Tap to calibrate your Skwitch.

Notes

Notes in Riff displayed here.

Help

Tap for help.

Key

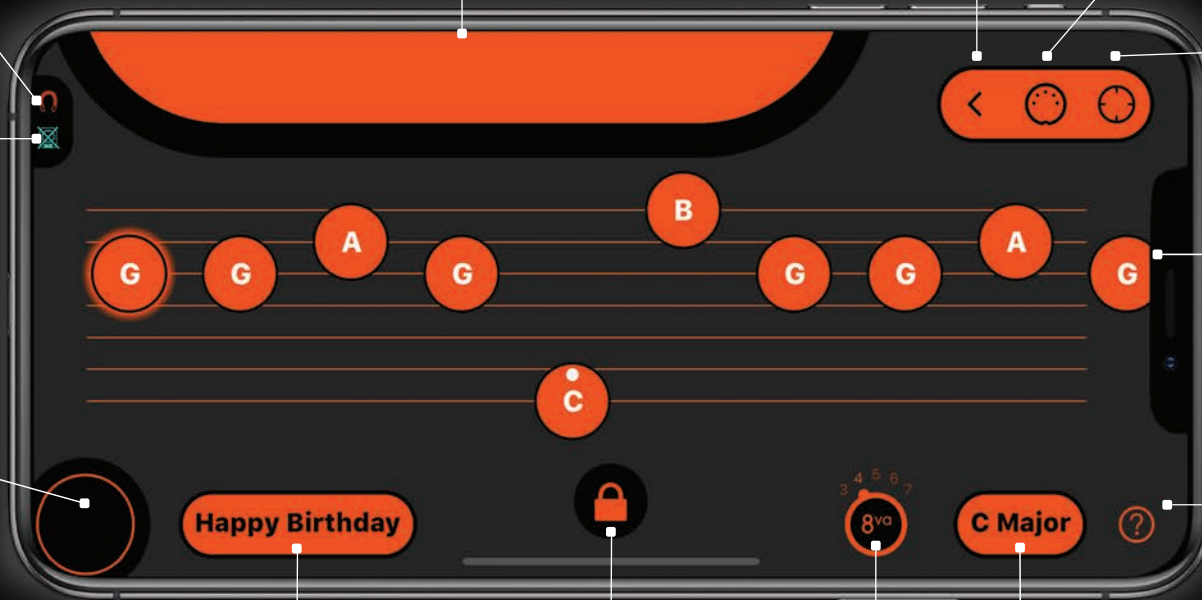
Tap to adjust the Key.

Lock/Unlock

Press and hold to unlock the notes and begin editing.

Octave

Tap to change the octave of the Riff.





Bluetooth MIDI set up

The **Bluetooth MIDI Menu** allows you to connect your Skwitch to other MIDI compatible Apps.



Bluetooth MIDI
Tap to advertise and connect to other devices

MIDI Mode
Tap to Select MIDI mode.

MIDI Reset
Tap to reset connection if playback issues

Bend Range
Adjust to match settings in the MPE App.



Help

The **Help Button** in an Audio or MIDI session can help you navigate through the menu and controls during a session.

Tap the help button to bring up the help nodes. Tapping a help node will bring up a quick explanation of the button/icons function.





Troubleshooting

The Skwitch Music App uses the compass sensor built into your iPhone to detect movement of a magnet embedded within the Skwitch button. It is affected by strong magnetic fields, and the **Skwitch Music App** needs to calibrate when it starts up (i.e. it needs to detect any nearby magnets so it can correct for them). See the “Before you begin” page within this guide for more details.

If the iPhone is not being detected it probably means that there are strong magnets nearby that might affect its performance.

Strong magnetic fields can be found in obvious places like loudspeakers and headphones, but also in some surprising places like in some supporting steel bars in desks and the arms of office chairs.

First things first:

You should always make sure that Skwitch is not clipped on to your iPhone when you start the app - the app always needs to go through its proper calibration process before you attach Skwitch.

So, try this:

- 1) Shut down the app (if it is running). Not just put it into the background, a proper shut down.
- 2) Make sure that the iPhone is not inserted into the Skwitch,
- 3) Place the iPhone on a flat surface, and move the Skwitch 20cm or so away from the iPhone.
- 4) Restart the app and follow the set up process.

If you are still having the same issue, try removing any obvious magnetic objects (loudspeakers etc) from the immediate area and follow steps 1-4 again.

Still problems?

Check for the non-obvious magnets & check the surface you are using it on - is it made of iron or steel?

If so try setting up somewhere different, like a wooden or glass surface. Are there steel supports or pins under the table?

If so try moving your iPhone to an area in-between the supports and not directly over the top of them.

If you are 10-20cm away from any metal supports during calibration you should be fine.

Hopefully that will get you connected properly. If not, the last thing to try is removing your iPhone from Skwitch, shutting down the app, then waving your phone in a figure-of-eight pattern for a few seconds (this will reset the sensors on the iPhone) then try steps 3 and 4 again.



Skwitch

For more information about Skwitch
visit www.skoogmusic.com/skwitch.

Any issues/questions please
contact us:



+44 (0)131-554-2838



support@skoogmusic.com

Connect with Skoogmusic

